



Technical equipment of the
German State Theatre Hall
-2022-

Stage area

Stage area and props depot are on the 2nd floor.

Stage and show hall are on the same level: ± 0

Italian box

- dimensions: W=8m, D=8+4m, H=16m, portal H= 5.5m, portal L= 7.5m
- headroom between picture stage and props storage: W= 5m, H= 2.5m
- 18 fly bars
- 2 lighting hoists
- 2 contrejour hoists
- 2x2 lateral hoists
- greek curtain

Auditorium/Unconventional stage

- dimensions: D= 20 m, W=10.6m, H=8m
- 5 lighting hoists
- 1 hoist in front of portal
- seating: 120 seats, 4 free mountable modules consisting of 4 modules with 3 seats on a row = 12 seats/row. 10 rows.

Props storage

- freight elevator: max 250 kg; H= 2m, W=1.5m, D=1.5 m
- electrical hoist: max 100 kg

Lights

Light consoles

- Spark 4D (mobile)
- Vector Violet (fixed)
- Vector Ultraviolet (mobile)

Equipment command system through DMX512 protocol (wired and wireless)

Dimmable circuits in the Italian box

- 12 circuits front fly bridge

- 4 circuits right fly bridge
- 4 circuits back fly bridge
- 4 circuits left fly bridge
- 8 circuits fly bar1 stage
- 12 circuits fly bar2 stage
- 4+4 circuits at the right-hand side of the stage
- 6+6 circuits proscenium
- 12 circuits stage floor
- 10 power sockets 220V – direct circuits

Dimmable circuits in the hall (unconventional stage)

- 46 circuits in the hall (5 fly bars)
- 12 circuits stage floor
- 23 power sockets 220V – direct circuits

Dimmable hall light (5 left, 5 right)

2 left circuits + 2 right circuits

Mobile stage lighting equipment

PAR 63 – 1000 W PAR 62 & 64 **50 pcs**

P.C. – 1000 W **30 pcs**

P.C. – 500 W **6 pcs**

P.C. 2000 W **4 pcs**

Profile 575 W **6 pcs**

Profile 750 W **18 pcs**

Profile 1200 W **6 pcs**

Cyclorama 1000 W **10 pcs**

Follow spot 1200 W **2 pcs**

Moving Head Martin Entour 350 LED **2 pcs**

Moving Head Martin Aura Wash LED **14 pcs**

Moving Head Martin Quantum Wash LED **2 pcs**

Stage Flood SGM LED RGBW **2 pcs**

Stage Flood Stairville LED RGBW **4 pcs**

Spectra Licht LED RGBW **10 pcs**

PAR LED 36 **5 pcs**

Profil ETC LED RGBW Source four S2 **2 pcs**

Profil ETC LED RGBW Source four **7 pcs**

HMI Arri 2500 W + scroller **1 pcs**

Fixed stage lighting equipment

P.C. – 1200 W **24 pcs**

P.C. Nota + scroller - 1200 W **11 pcs**

P.C. - 2000 W **8 pcs**

P.C. – 1000 W **9 pcs**

Follow spot 1200 W **2 pcs**

Stage Flood SGM LED RGBW **1 pcs**

Stage Flood Stairville LED RGBW **2 pcs**

Profile ETC LED RGBW Source four S2 **3 pcs**

Moving Head Martin Krypton 575 **2 pcs**

Special effects equipment

Light smoke machine Martin 1800 **2 pcs**

Heavy smoke machine Antari **1 pcs**

Heavy smoke JEM Glacier Martin **1 pcs**

Light smoke JEM Martin **2 pcs**

Haze JEM Martin **1 pcs**

Sound system

- players: Tascam minidisc (2 pcs); Tascam combo tape + CD (1 pcs), Tascam

SS-CDR200 – sdCard, cfCard (4 pcs)

- Sennheiser lavalier (headset) EW150, EW300 (10 pcs)

- Sennheiser wireless microphones (4 pcs)

Fixed audio installation in the hall – digital line

- YAMAHA QL 5 digital mixer
- JBL VRX speakers front of the auditorium 2X1000W (line array+sub)
- JBL VRX speakers back of the auditorium 2X1000W (line array)
- audio signals transmission through Ethernet

Video

Mixer Roland U-40HD **1 pcs**

Panasonic laser video projector 10 000 lm ultrawide, wide, normal lens **1 pcs**

laser video projector Panasonic RZ570 – 6000 lm **2 pcs**

lamp video projector Panasonic DZ570 – 5000 lm **2 pcs**

mechanic shutter DMX512 **2 pcs**

video mixer Edirol V4 – 4 channel **1 pcs**

cables HDMI 20m **5 pcs**

cables VGA 5-10m **5 pcs**

cables RCA 20m **5 pcs**

extension VGA-Ethernet-VGA 20>80m

splitter video 4xVGA **1 pcs**

Stage management

- soundproof stage management cabin with audio command desk and closed circuit TV
- intercom with extensions to the stage and technical locations (actors' room, props, wardrobe, make-up, mechanics; with duplex function for the lighting, sound cabin)
- video surveillance: 2 cameras in the auditorium, 1 camera in the foyer
- wireless bi-directional intercom system for the technicians (5 headsets)

Fixed audio installation in the hall - digital

Yamaha QL5

Yamaha RO8-D **1 pcs**

Yamaha RIO 168-D **2 pcs** – not fixed

speakers JBL VRX front of the hall – 2x1000W (line array+sub)

speakers JBL VRX back of the stage – 2x1000W (line array)

boxe JBL PRX back of the stage – 2x500W

audio transmission through Ethernet (Dante Network)

QLab connected through DVS (Dante Virtual Soundcard)

Fixed audio installation in the hall – analogical

Speakers Dynacord: 2 x100W portal

players: Tascam SS-CDR200 – SD Card, CF Card **2 pcs.**

Tascam SS-R100 **2 pcs.**

Microphone:

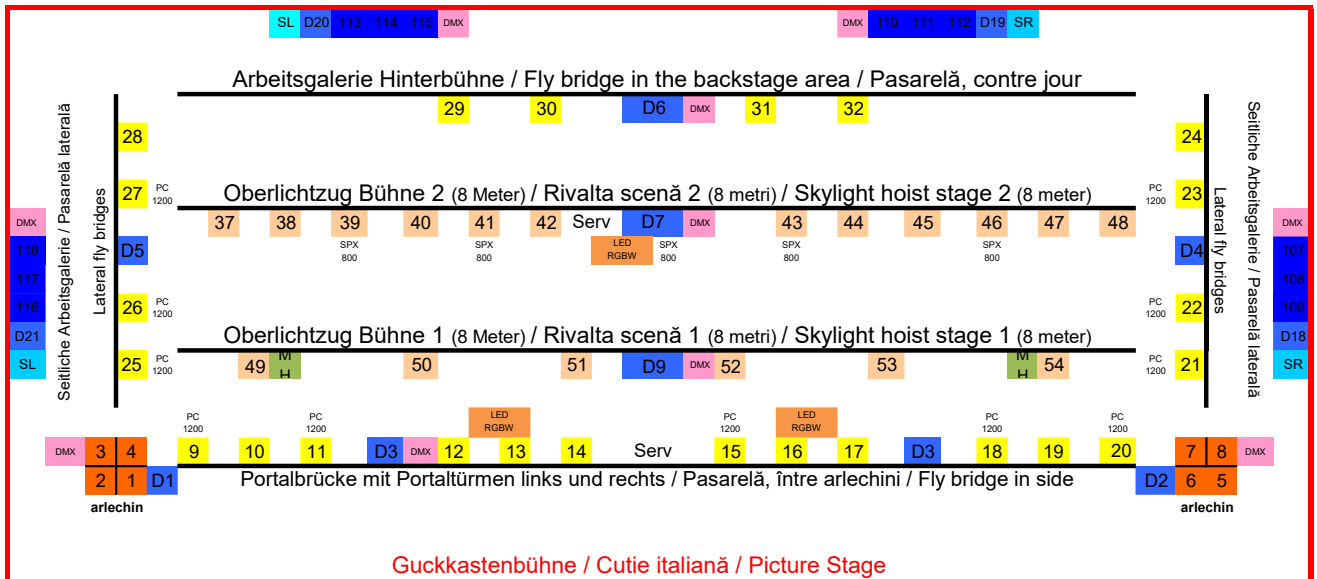
Sehnheiser (headset and beige lanyard microphone): EW 300 G2 și G3 **14 pcs.**

Sehnheiser wireless (handheld) **4 pcs.**

Shure SM 58 **4 pcs.**

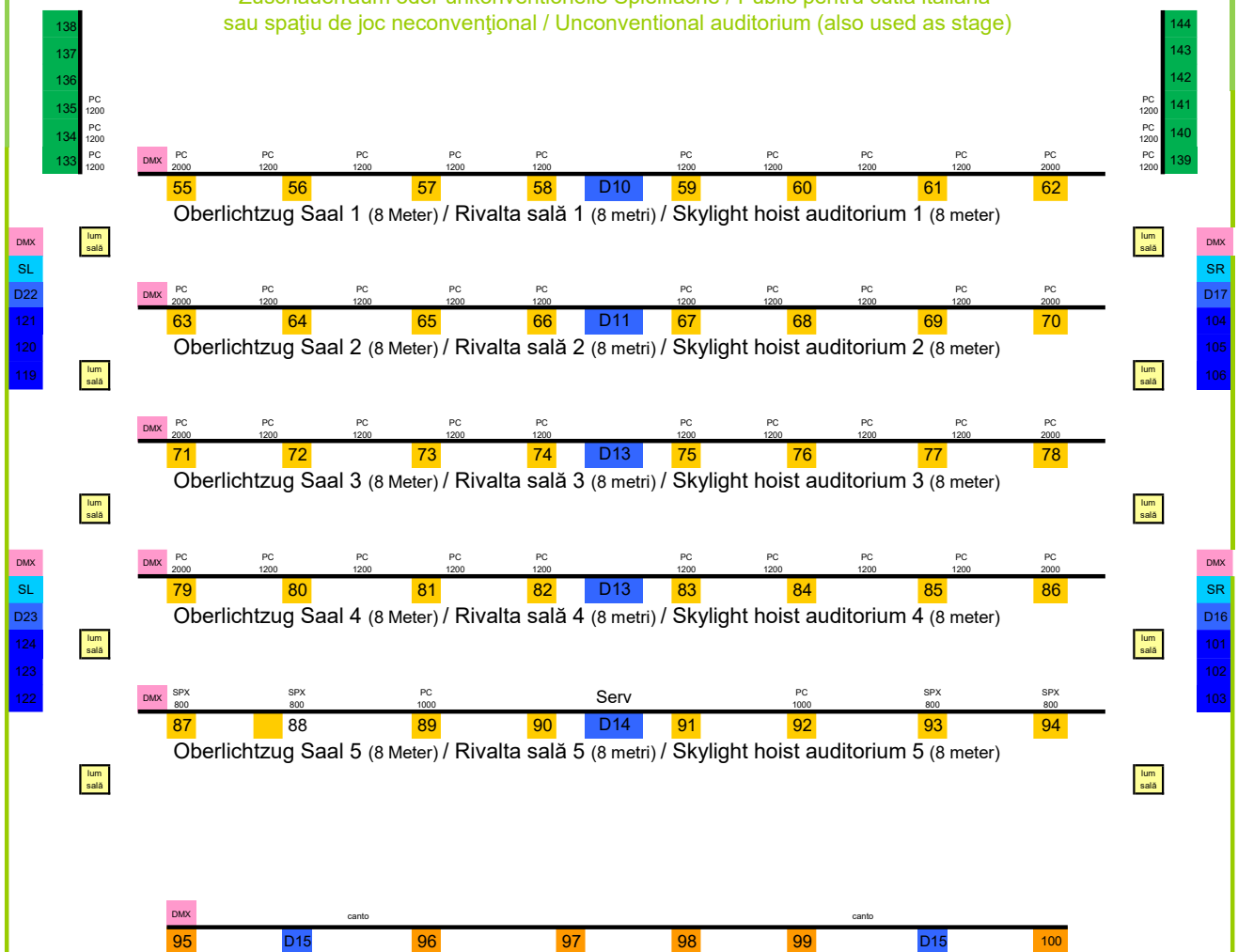
DPA 4099 **8 pcs.**

AKG C 414 **2 pcs, pairs**



Guckkastenbühne / Cutie italiană / Picture Stage

Zuschauerraum oder unkonventionelle Spielfläche / Public pentru cutia italiană
 sau spațiu de joc neconvențional / Unconventional auditorium (also used as stage)



lum sala	> Saallicht / Lumina sala / Hall light 125,126,127,128	
SL	> Prize directe in podea pentru sonorizare, stanga / Direct floor sockets for sound, left	
SR	> Prize directe in podea pentru sonorizare, dreapta / Direct floor sockets for sound, right	
D...	> Prize directe in podea, pasarele si rivalte / Direct floor sockets, walkways and rivaltas	
111	> Circuite dimabile in podea / Dimmable circuits in floor	
22	> Circuite dimabile pe pasarele in cutia italiana / Dimmable circuits on walkways in italian box	
44	> Circuite dimabile pe rivalte in cutia italiana / Dimmable circuits on rivaltas in italian box	
9	> Circuite dimabile pe rivalte in sala / Dimmable circuits on rivaltas in tha Hall	
133	> Circuite dimabile proscena / Dimmable circuits proscenium	
99	> Circuite dimabile pe pasarela in spatele salii / Dimmable circuits on walkway behind stage	
1	> Crcuito dimabile pe arlechin / Dimmable circuits on Harlequin	
DMX	> Prize pentru semnale DMX / Sockets for DMX512 signals	
Serv	> Lumina de servicii / Service light	
MH	> Moving Head Martin Krypton 575	
LED RGBW	> Fluter / Cicloramă / Fluter LED RGBW (SGM & Starville)	

Feste Scheinwerfer / Reflectoare montate / Fixed lighting positions

PC 1000	> Plankonvex-Linsenscheinwerfer / Reflector plan-convex / Plan-convex lens spotlight 1000W	24
PC 1200	> Plankonvex / Reflector plan-convex / Plan-convex spotlight PC1200W + scroller	11
PC 1200	> Plankonvex-Linsenscheinwerfer / Reflector plan-convex / Plan-convex lens spotlight 1200W	41
SPX 800	> Selecon Profilscheinwerfer / Profile Selecon / Profile Spotlights 800W	12
PC 2000	> Plankonvex-Linsenscheinwerfer / Reflector plan-convex / Plan-convex lens spotlight 2000W	8
PAR 1000	> PAR 64 Scheinwerfer / Reflector PAR 64 / PAR 64 Spotlight 1000W	6
ETC 750	> ETC Profilscheinwerfer / Profile ETC / Profile Spotlights 750W	2
canto	> Verfolgerscheinwerfer Canto / Urmăritor Canto / Searchlight Canto 1200W	2
LED RGBW	> Fluter / Cicloramă / Flood SGM P5 RGBW	1
LED RGBW	> Fluter / Cicloramă / Flood Stairville Stage Flood Inst QCL 48x10W	2
canto	> Fluter / Cicloramă / Fluter LED RGBW (SGM & Starville)	3
		<hr/> 112

Mobile Scheinwerfer / Reflectoare libere / Mobile and adjustable lighting positions

	> Plankonvex-Linsenscheinwerfer / Reflector plan-convex / Plan-convex lens spotlight 500W	6
	> Plankonvex-Linsenscheinwerfer / Reflector plan-convex / Plan-convex lens spotlight 1000W	30
	> Plankonvex-Linsenscheinwerfer / Reflector plan-convex / Plan-convex lens spotlight 2000W	4
	> PAR 64 Scheinwerfer / Reflector PAR 64 / PAR 64 Spotlight 1000W	10
	> ETC Profilscheinwerfer / Profile ETC / Profile Spotlights 750W	18
	> ETC Profilscheinwerfer / Profile ETC / Profile Spotlights 575W	4
	> RJ Profilscheinwerfer / Profile ETC / Profile Spotlights 1200W	6
	> Verfolgerscheinwerfer Canto / Urmăritor Canto / Searchlight Canto 1200W	2
	> Moving Head Martin Entour LED	2
	> Moving Head Martin Aura Wash LED	2
	> Moving Head Martin Quantum Wash LED	2
	> Fluter / Cicloramă / Flood SGM P5 RGBW	2
	> Fluter / Cicloramă / Flood Stairville Stage Flood Inst QCL 48x10W	3
	> Spectra Light Bars LED RGBW	10
	> PAR 36 LED	15
	> ETC Profilscheinwerfer / Profile ETC / Profile Spotlights LED RGBW Source Four S2	2
	> ETC Profilscheinwerfer / Profile ETC / Profile Spotlights LED RGBW Source Four	6
	> Arri HMI 2500W + color changer scroller	1
	> Fluter / Cicloramă / Flood 1000W	4
		<hr/> 129

Nebelmaschinen / Maşini de Fum / Smoke Machines

	> Martin Magnum 1800	2
	> Antari Ice 101	2